



This symbol is intended to alert the user of important operating and maintenance (servicing) instructions in the literature provided with the equipment.



This symbol is intended to alert the user of the presence of uninsulated dangerous voltage within the product's enclosure that may present a risk of electric shock.

## 1 CAUTION

**Read Instruction:** Read and understand all of the safety and operating instructions before using this equipment.

**Retain Instructions:** The safety instructions should be kept for future reference.

**Follow Warnings:** Follow all warnings and instructions marked on the equipment or in the user manual.

**Avoid Attachments:** Do not use tools or attachments that are not recommended by *Alyseum* Company because they may be hazardous.



### Installation:

- ? Choose the installation location of your unit carefully.
- ? Avoid placing it in direct sunlight or close to a source of heat.
- ? Also avoid locations subject to vibrations and excessive dust, heat, cold or moisture.



### Servicing:

- ?? Refer all servicing to qualified service personnel.
- ?? There are no user-serviceable parts inside.
- ?? To prevent the risk of shock, do not attempt to service this equipment yourself because opening or removing covers may expose you to dangerous voltage or other hazards.



**WARNING: TO PREVENT FIRE OR ELECTRIC SHOCK HAZARD, DO NOT EXPOSE THIS APPLIANCE TO RAIN OR MOISTURE.**



# U3-88c - User’s manual

## 2 Contents

1	CAUTION.....	1
2	Contents.....	2
3	Hardware U3-88c.....	3
3.1	Package content.....	3
3.2	Applications.....	3
3.3	Specifications.....	3
3.4	Panel description.....	3
3.5	How to connect U3-88c to your computer?.....	4
3.5.1	For users using WIN10 or OSX 10.7.5 or later.....	4
3.5.2	For users using WIN XP, Vista, 7, 8 + OSX (Pentium) less 10.7.5.....	4
3.5.3	3.5mm mini stereo Jack -to- MIDI 5 pin DIN cables.....	4
4	Software U3-88c.....	5
4.1	LED properties.....	5
4.2	DIP Switch settings & All-Note Off push Button.....	5
4.3	Driver installation.....	5
4.4	Connect MIDI port in your computer.....	5
4.4.1	WIN.....	5
4.4.2	OSX.....	5
4.4.3	Freeware CopperLan Manager.....	6
5	Miscellaneous.....	7
5.1	Disclaimer.....	7
5.2	Maintenance.....	7
5.3	Static Electricity, ESD.....	7
5.3.1	Standard symbols for ESD advertising.....	7
5.3.2	Some tips and precautions for ESD sensitive environment.....	7
5.4	Statement and Agency Compliance.....	8
5.4.1	WEEE (for EU countries).....	8
5.4.2	RoHS Compliance (for EU countries).....	8
5.4.3	CE (for EU countries).....	8
5.5	Warranty and repair.....	8
5.6	MIDI Chart.....	9

## 3 Hardware U3-88c

### 3.1 Package content

- ? 1 U3-88c device
- ? 1 USB3.0 (2.0 compatible) cable - A/B type – color blue - 1,8 meter length
- ? User's manual access card

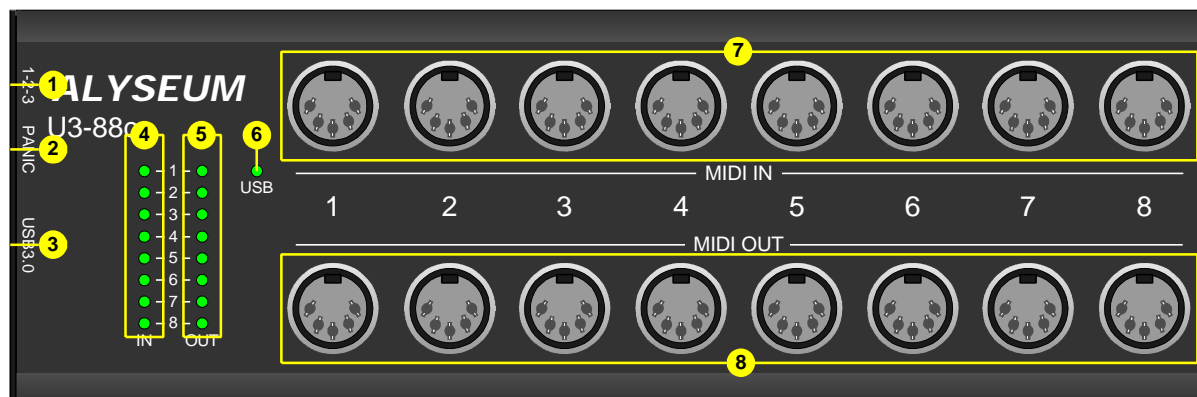
### 3.2 Applications

- ? Recording Studio
- ? Home Studio
- ? Backstage

### 3.3 Specifications

- ? Dimensions (W x H x D): 212 x 68 x 28 mm
- ? Weight: 0,35 Kg
- ? Power Consumption: less 1 Watt

### 3.4 Panel description



1. DIP Switch - 3 positions
2. Push button - All Note Off
3. USB3.0 – 1 Blue Type B connector
4. Green LED - 8 MIDI inputs activities
5. Green LED - 8 MIDI outputs activities
6. Green LED - 1 USB LED activity
7. DIN41524 (5 pin) – 8 MIDI Inputs
8. DIN41524 (5 pin) – 8 MIDI Outputs

### 3.5 How to connect U3-88c to your computer?

#### 3.5.1 For users using WIN10 or OSX 10.7.5 or later.

Find a free USB3.0 port on your computer. This port on your computer is generally blue to distinguish it from the receptacles on USB2.0 ports. So, if the PC has a blue port, that is a good indication of USB3.0 support.



USB3.0 port with a blue receptacle and SS for Super Speed logo.

If your computer doesn't have a USB3.0 port, don't worry, U3-88c can also work at standard speed (auto detect & backward compatible USB2.0).



To benefit the performances of the USB3.0, you need 3 or 4 conditions:

A certified USB3.0 cable + A USB3.0 port on your computer  
+ WIN 10 or MAC OSX 10.7.5 or later + If needed, a USB3.0 HUB.

#### 3.5.2 For users using WIN XP, Vista, 7, 8 + OSX (Pentium) less 10.7.5.

U3-88c must be connected on a USB2.0 port. Using a USB3.0 port can generate disturbing. Do not take into consideration the automatic information from WIN7/8, which proposes to you to connect the U3-88c to a USB3.0 port.

U3-88c can be connected to a USB2.0 port with the original USB3.0 cable delivered with your interface, anyway you can use any USB2.0 A/B type cable.

#### 3.5.3 3.5mm mini stereo Jack -to- MIDI 5 pin DIN cables.

Today, many products use a stereo 3.5mm mini stereo jack connector on the product itself. Some manufacturers of Eurorack modules don't isolate pin 3 of the receptacle and generate a "ground loop" problem!

A solution is to make yourself a 3.5mm mini stereo Jack-to-MIDI 5 pin DIN cables, where you do not connect the cable shielding on the 3.5mm mini jack.

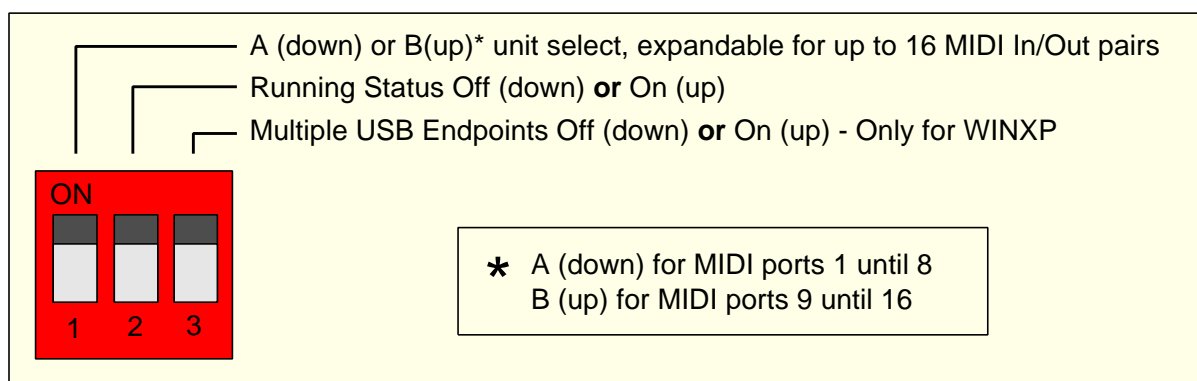
## 4 Software U3-88c

### 4.1 LED properties

- ? Green LED - 8 MIDI inputs activities: blinking for each MIDI message received on the corresponding input port
- ? Green LED – 8 MIDI outputs activities: blinking for each MIDI message sent on the corresponding output port
- ? Green LED - 1 USB LED activity:
  - Oscillates slowly if connection to your computer is established
  - Remains Off or On if connection to your computer is not established

### 4.2 DIP Switch settings & All-Note Off push Button

DIP switch is located on the left side of the U3-88c, move the positions of the switch **GENTLY** with a pen tip.



Multiples USB Endpoints is usable only with Microsoft MIDI class drivers (from WIN XP), it won't work with **Mac OSX** or **WIN 10**

All Notes Off push button, for those quirky synths that get stuck sometimes.

### 4.3 Driver installation

Your U3-88c is full MIDI compliant.

USB2.0, driverless for WIN XP, Vista, 7/8/10 + OSX (Pentium).

USB3.0, driverless for WIN 10 and OSX 10.7.5 or later.

### 4.4 Connect MIDI port in your computer

#### 4.4.1 WIN

Under WIN, start your MIDI application, like a sequencer or notation software to check the MIDI ports there.

#### 4.4.2 OSX

Under OSX, you can launch the Audio MIDI setup application, U3-88c will be listed under MIDI device with 8 ports.

#### 4.4.3 Freeware CopperLan Manager

If you prefer to use the freeware CopperLan Manager to establish your MIDI connections, we recommend to use revision 1.4.5 or less.

**NOTE 1:** We don't offer support for this freeware!

**NOTE 2:** Some users of this freeware report a problem.

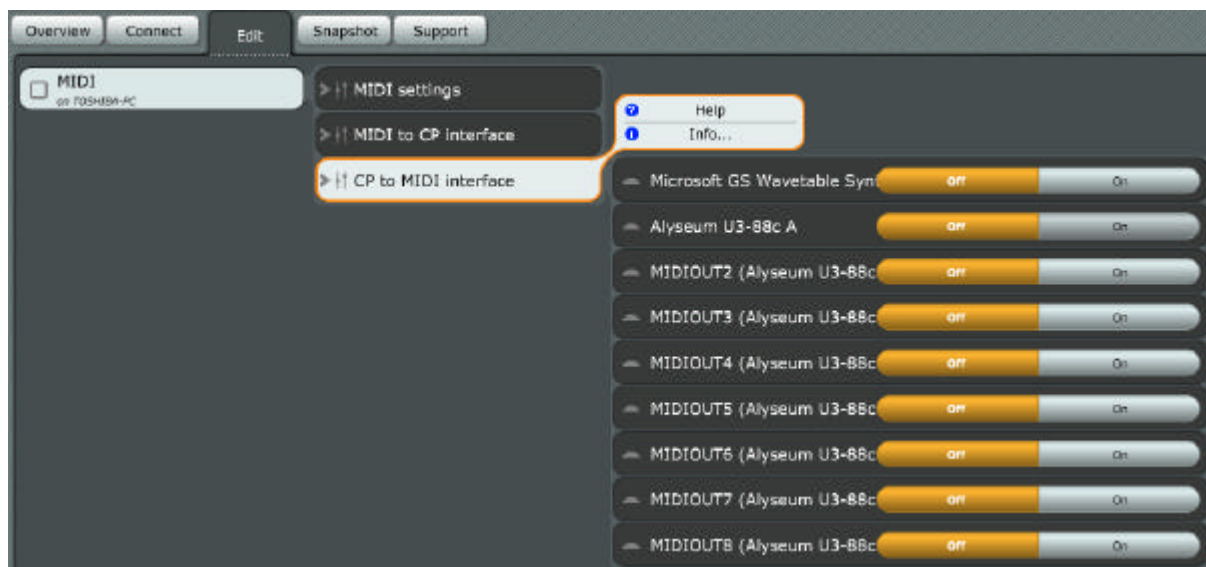
After installation, a few or all MIDI ports are hidden under the tabs OVERVIEW and CONNECT



To resolve the problem, activate the Tab EDIT

Select MIDI to CP interface and turn ON each MIDI port IN of U3-88c

Select CP to MIDI interface and turn ON each MIDI port OUT of U3-88c



Check the tabs OVERVIEW or CONNECT and the MIDI port will appear.

## 5 Miscellaneous

### 5.1 Disclaimer

All rights reserved. Reproduction in whole or part of this document is prohibited without the express permission of **Alyseum**.

© 2011-2018 **Alyseum**.

The information and specifications described in this manual are subject to change without notice.

Other products or brand names mentioned herein are trademarks or registered trademarks of their respective holders.

### 5.2 Maintenance



Switch Off the power before maintenance.

Do not attempt to clean the unit with chemical solvents (thinner, benzene or alcohol) as this might damage the finish. Use only a clean, dry cloth.

### 5.3 Static Electricity, ESD



Electrostatic discharge (ESD) can cause malfunction and/or damage to electronic devices if discharged into the device.

Even **Alyseum** products have built-in protections; ESD exists and might build up at levels that could harm your equipment.

#### 5.3.1 Standard symbols for ESD advertising



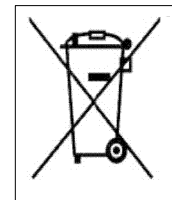
#### 5.3.2 Some tips and precautions for ESD sensitive environment

- ? Make sure to discharge any built-up static electricity from yourself and your device before touching or connecting one device to another
- ? Ground yourself by touching an earth grounded metal surface before handling your device and other equipments.
- ? For fixed installations, place the device in a grounded metallic rack.
- ? Ensure air relative humidity at minimum 60%.
- ? Install ESD specific prevention items, such as grounding mats.
- ? Reduce movement speed when handling or (dis)connecting devices
- ? Avoid carpet or laminate and synthetic flooring.

## 5.4 Statement and Agency Compliance

### 5.4.1 WEEE (for EU countries)

**Waste Electrical and Electronic Equipment** (Directive 2002/96/EC)  
(applicable for E.U. Customers or others countries with separate collection systems)



1. This marking shown on the product or its literature, indicates that it should not be disposed with other household wastes at the end of its working life.
2. To prevent possible harm to the environment or human health from uncontrolled waste disposal, please separate this from other types of wastes and recycle it responsibly to promote the sustainable reuse of material resources.
3. Household users should contact either the retailer where they purchased this product, or their local government office, for details of where and how they can take this item for environmentally safe recycling.

### 5.4.2 RoHS Compliance (for EU countries)

**Alyseum** products complies with the European Union restriction of the use of certain hazardous substances in electronics equipment, (RoHS directive 2002/95/EC)



The RoHS directive prohibits the sale of certain electronic equipment containing some hazardous substances such as Mercury, Lead, Cadmium, Hexavalent chromium and certain Flame-retardants (PBB & PBDE) in the European Union.

<http://eur-lex.europa.eu/LexUriServ/LexUriServ.do?uri=CELEX:32002L0095:EN:HTML>

### 5.4.3 CE (for EU countries)

**Alyseum** products comply with the requirements of European Directive 89/336/EC.



## 5.5 Warranty and repair

**Alyseum** warrants to you, the original purchaser, that each of its products will be free from defects in materials and workmanship for a period of **TWO YEARS** from the date of purchase.

This warranty does not apply to any products, which have been repaired or altered by other than repair personnel authorized by **Alyseum**, or which have been subject to ESD, moisture, abuse, accident or improper installation and using.

**Alyseum** assumes no liability as a consequence of such events under the terms of this Warranty.

Please consult your shop for more details.



## 5.6 MIDI Chart

U3-88c MIDI IMPLEMENTATION CHART ver.1.0. 2016-08-23

Function		Transmitted	Recognized	Remarks
Basic Channel	Default	1-16	1-16	pass-through
	Changed	--	--	not applicable
Mode	Default	--	--	not applicable
	Messages	X	X	pass-through
	Altered	--	--	not applicable
Note Number		0-127	0-127	pass-through
Velocity		X	X	pass-through
After Touch	Keys	X	X	pass-through
	Channels	X	X	pass-through
Ptch Bend		X	X	pass-through
Control Change		X	X	pass-through
Prog. Change True#		X	X	pass-through
System exclusive		X	X	pass-through
System Common	Song Position	X	X	pass-through
	Song Select	X	X	pass-through
	Tune Request	X	X	pass-through
System Realtime	Clock	X	X	pass-through
	Commands	X	X	pass-through
Aux Messages	Local On/Off	X	X	pass-through
	All Notes Off	X	X	pass-through
	Active Sensing	O	X	
	System Reset	O	O	
Notes				

O= Implemented

X= Not supported